

Blue line collection SOP

Improve the synthetic streams with manually collected data

SOP for blue line collection

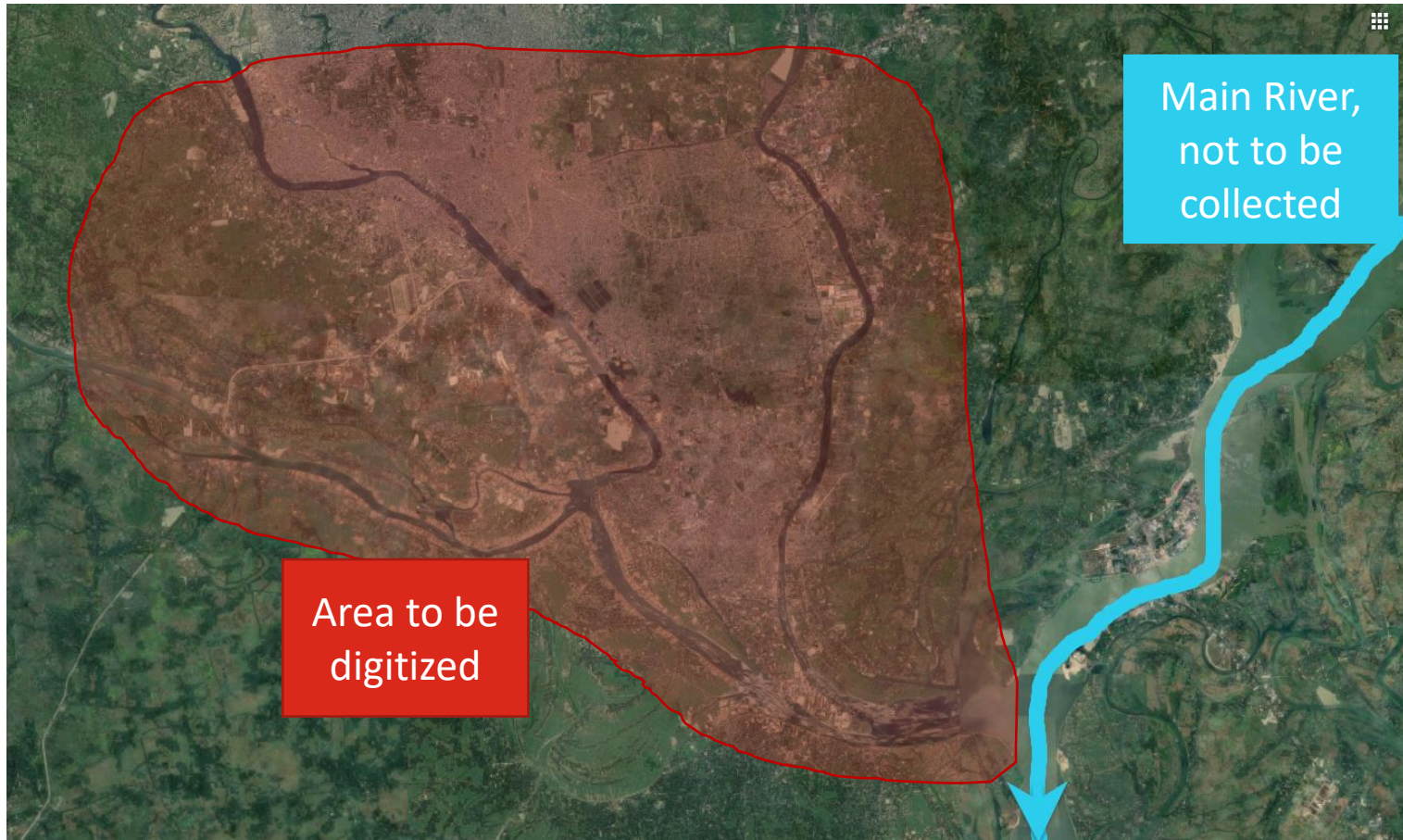
1. Start the collection at the location of the site – if that location is unknown, start collection as much downstream as possible
2. Open the app and start a new track
3. Fill in a name for the track and collect a first point at your starting point
4. Go upstream
5. Collect points regularly along the path (about every 50m) – however, if the waterway is curved, more points are needed, if it's a straight line, less points will do
6. When hitting a junction, choose one path and continue collecting tracks
7. Once you reach the end of a path, finish the track.
8. If you crossed a junction, go back to the junction point and digitize the remaining branch(es). Make sure to not collect points on your way back.

Note: you may be using a form that uses a geotrace, which collects continuously.

Good collection example



Good collection example



Good collection example



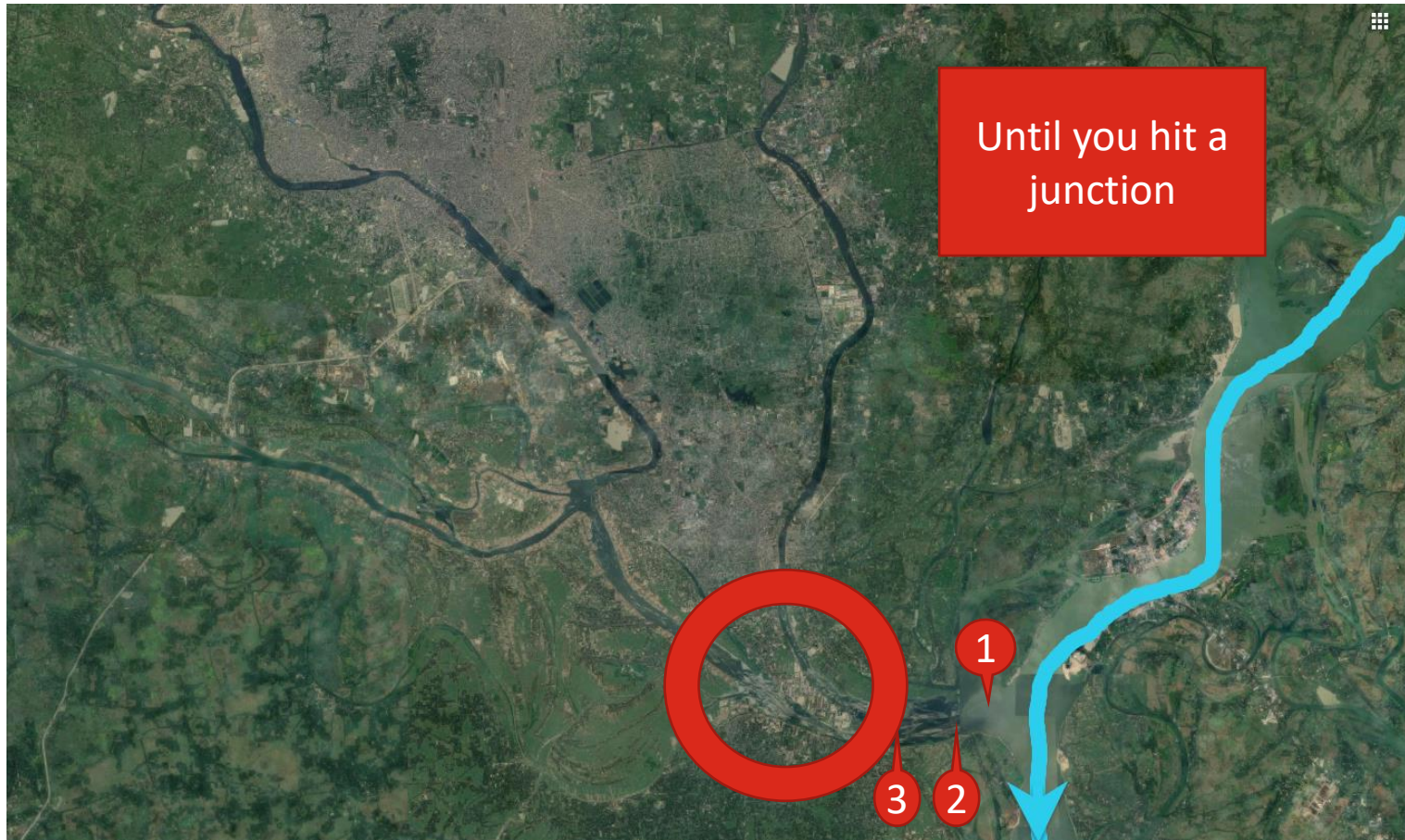
Good collection example



Good collection example



Good collection example



Good collection example



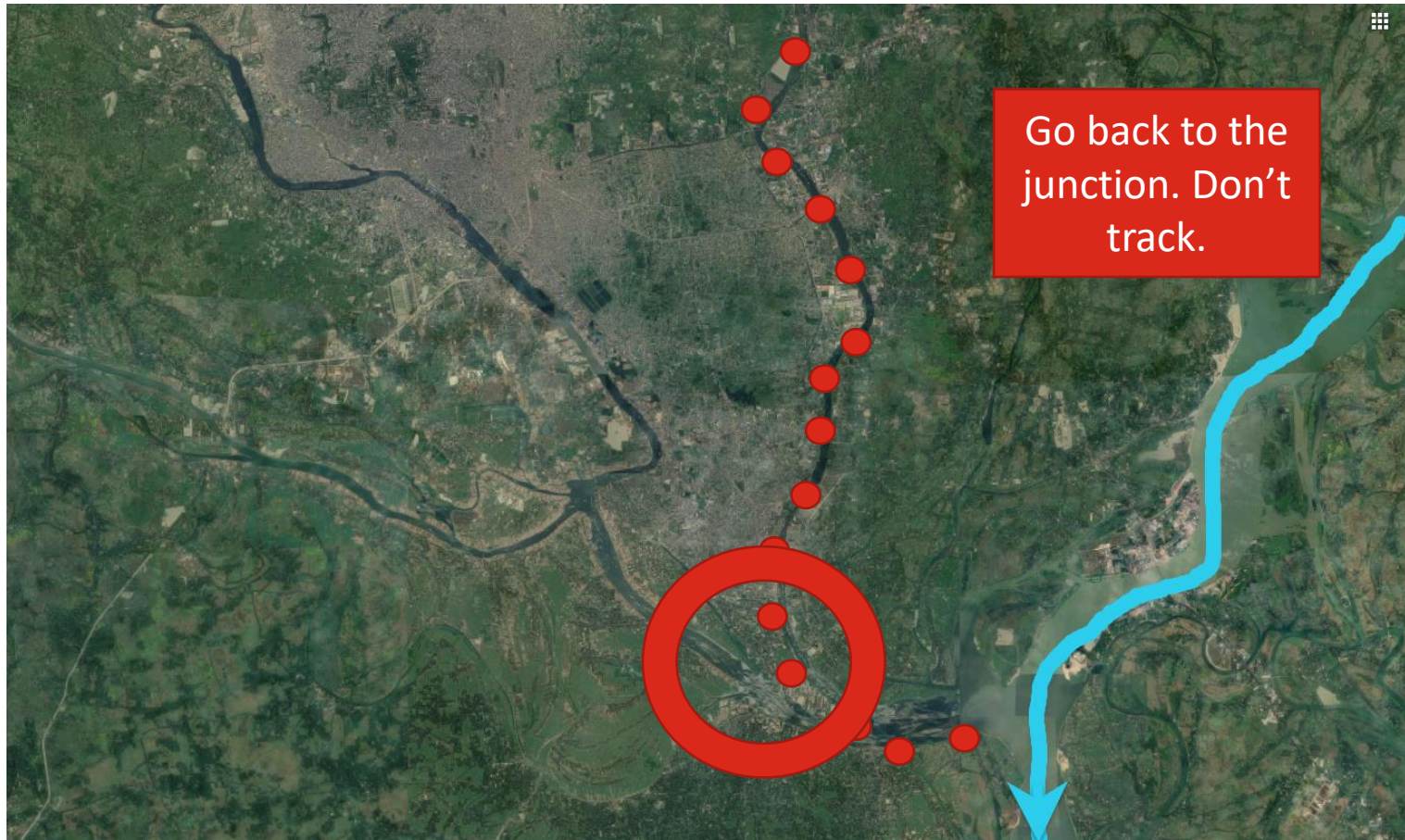
Good collection example



Good collection example



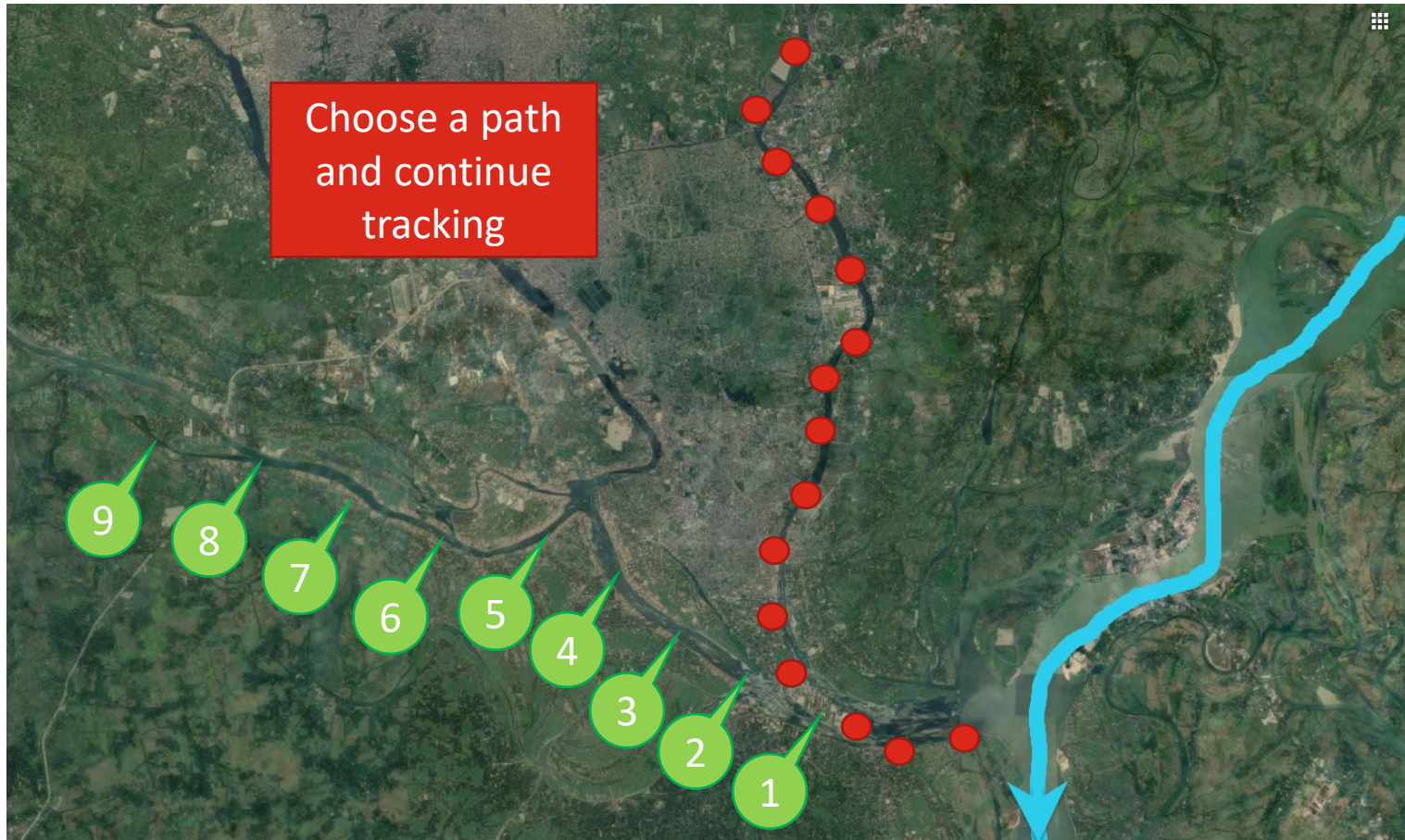
Good collection example



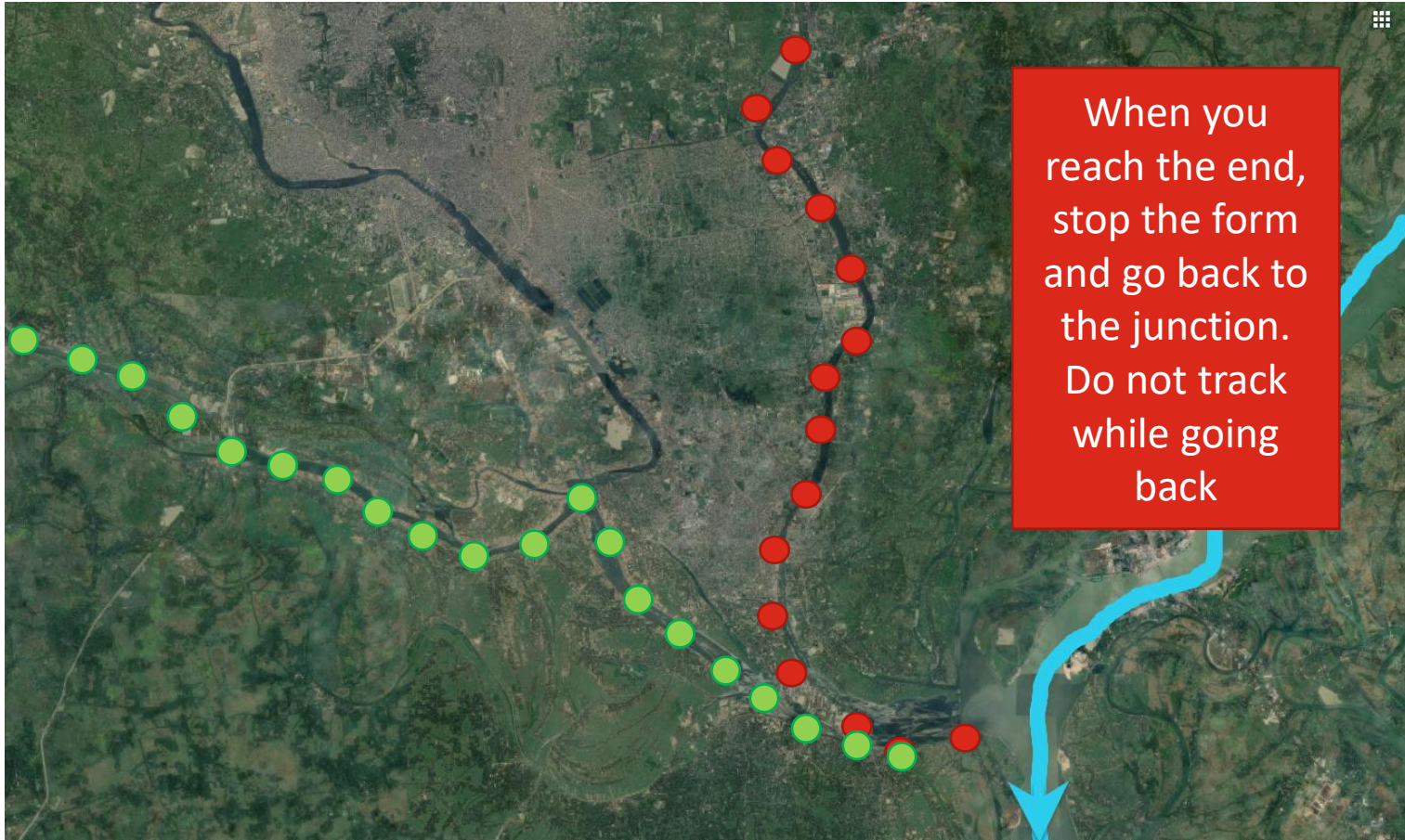
Good collection example



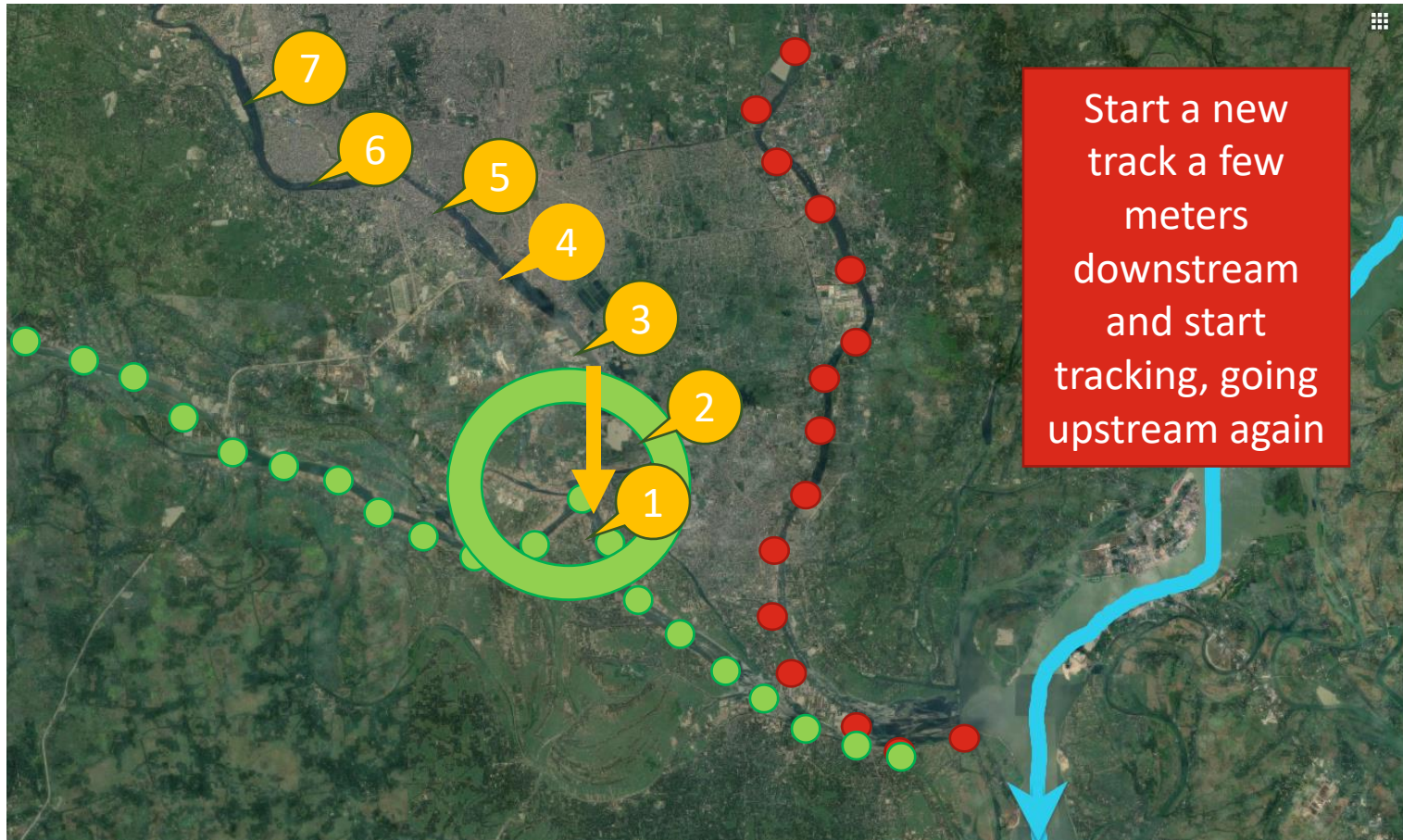
Good collection example



Good collection example



Good collection example



Good collection example



Important considerations

Number of points needed in straight line vs curves



Not enough points collected. It results in Incorrect blue lines.

Important considerations

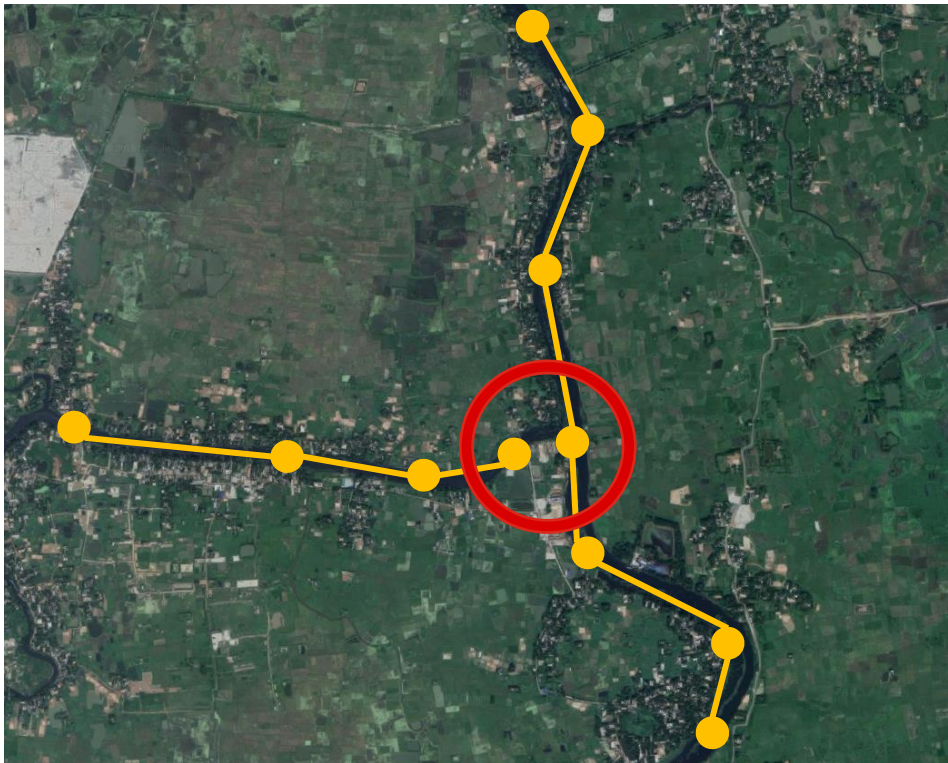
Number of points needed in straight line vs curves



- In straight lines, you can have less points
- In curves, collect more points

Important considerations

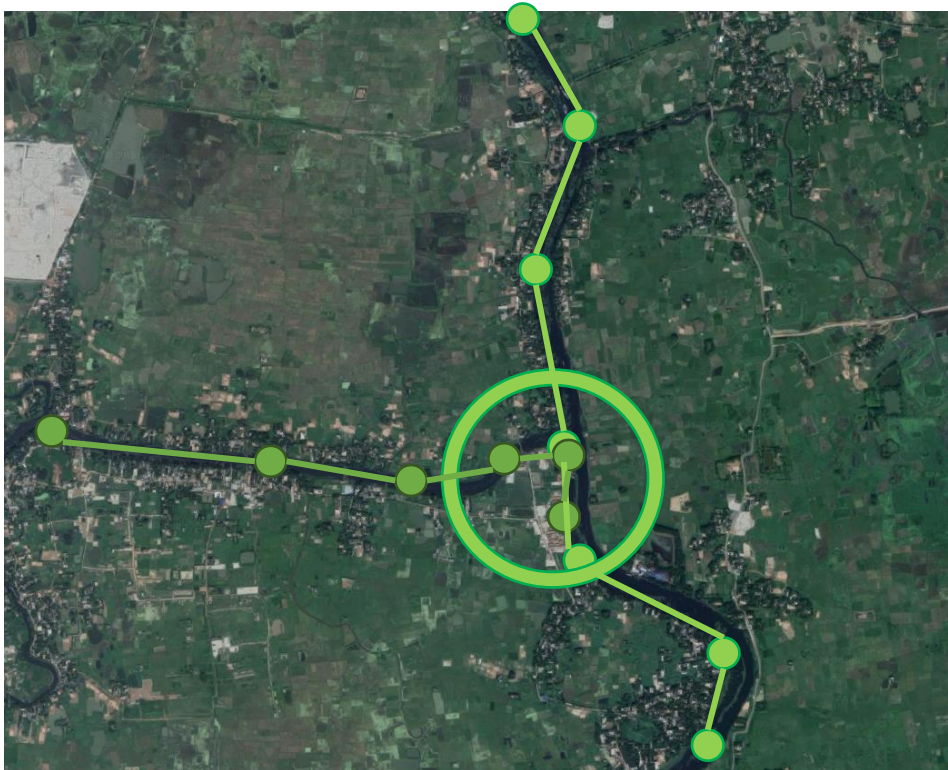
Segments need to connect at junctions



The lines won't connect

Important considerations

Segments need to connect at junctions



Start tracking downstream
of the junction

Important considerations

Finalize a track at the end of each path



If you continue tracking, the dotted line is going to be added.

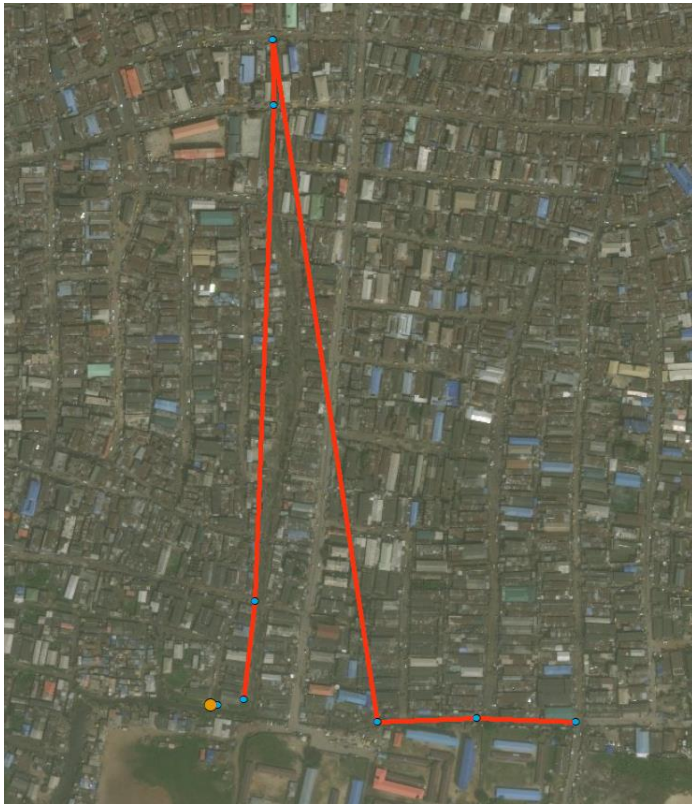
Important considerations

Finalize a track at the end of each path



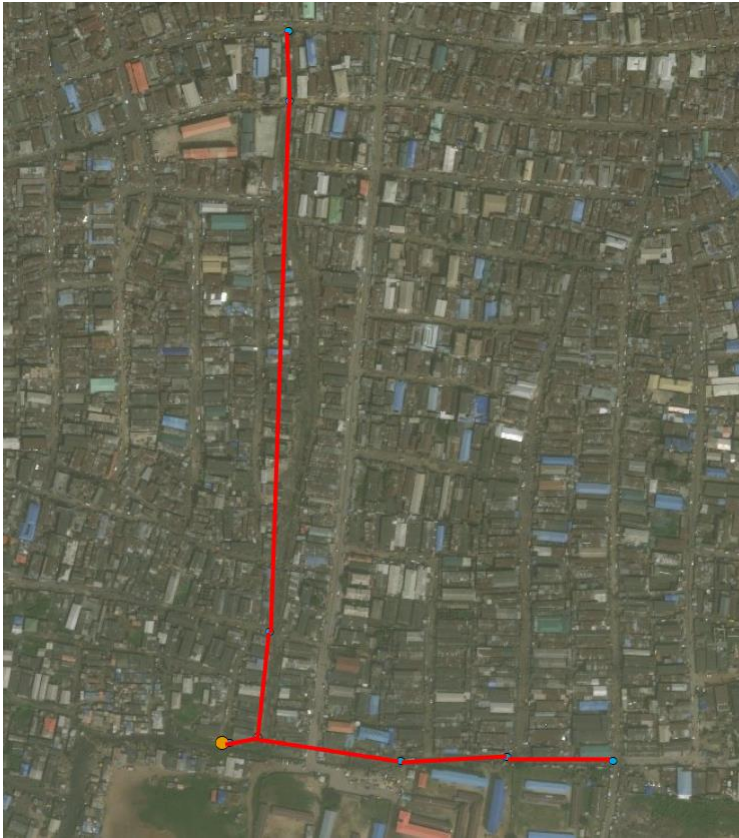
Start a new track at the junction.

Examples of poor blue line collection



- One form to collect two segments
- Didn't start downstream from the junction to collect the side arm

Examples of good blue line collection



Examples of poor blue line collection



- Collection of data on the way back

Examples of poor blue line collection

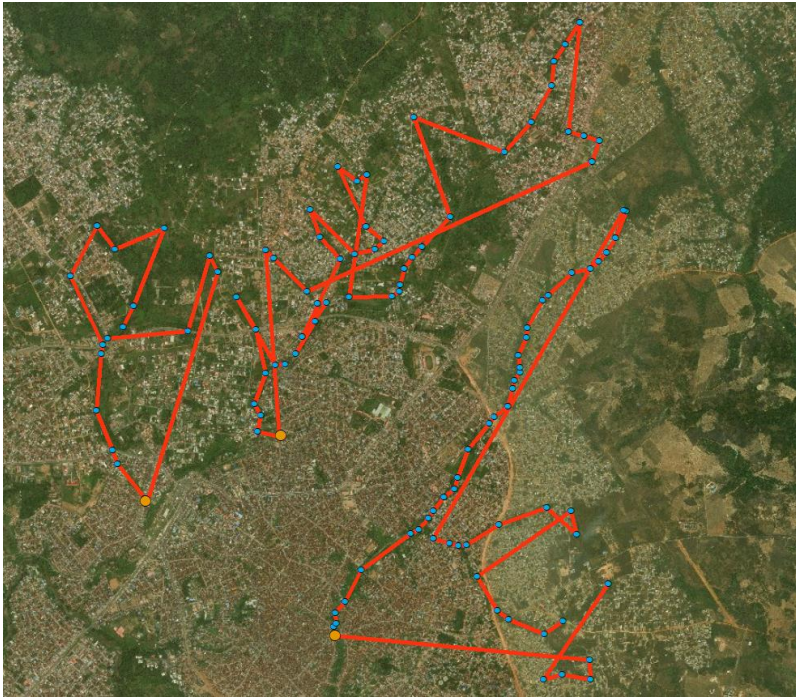


- Not enough points – the stream seems to cross the stadium
- Tracks weren't stopped – resulting in a loop and a zig-zag

Examples of good blue line collection



Examples of poor blue line collection



- Unclear what was done here...